

Name Key

Theory Level \_\_\_\_\_

## Music Theory Check-Up

Complete this check-up *only through your level of theory*. When you come to the indication for your level to stop, you do not need to continue. If you do not finish, you should complete the check-up at home.

Show your parents what you have studied this year.

**Ear Training: Everyone begins with the following ear training examples:**

1. Interval Identification – identify the following intervals

- a. m3
- b. M7
- c. m6

2. Whole step or Half step?

- a. Half
- b. whole
- c. whole

3. More Interval ID – name the following intervals

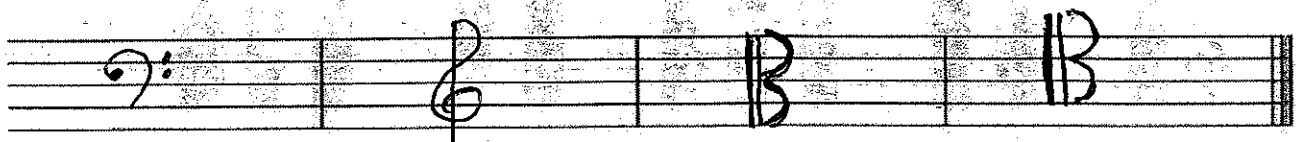
- a. P4
- b. M6
- c. m7

4. Melodic Dictation – write the following melody:



**Written questions - Everyone completes this section:**

1. Draw the clef signs as indicated:



BASS

TREBLE

ALTO

TENOR

2. Name the following notes - notice the clef:

A musical staff with five measures. The first measure has a treble clef and a note on the first line (F). The second measure has a bass clef and a note on the second space (E). The third measure has a bass clef and a note on the first space (C). The fourth measure has a bass clef and a note on the second space (A). The fifth measure has a bass clef and a note on the first space (G). The sixth measure has a treble clef and a note on the second space (E). The seventh measure has a treble clef and a note on the first space (G). The eighth measure has a treble clef and a note on the second space (F). The ninth measure has a bass clef and a note on the second space (D). The tenth measure has a bass clef and a note on the first space (E). The eleventh measure has a bass clef and a note on the first space (D). The twelfth measure has a bass clef and a note on the first space (B).

F E C A G E G F D E D B

3. Write the letter names of the sharps and flats in the order they appear on the staff:

Sharps

Flats

F C G D A E B

B E A D G C F

4. Draw all 7 sharps in order on the staff below - Be sure to add a clef:

A musical staff with a treble clef and seven sharps (#) placed on the lines from bottom to top: F, C, G, D, A, E, B.

5. Draw all 7 flats in order on the staff below - use a different clef than in question 4:

A musical staff with a bass clef and seven flats (b) placed on the lines from bottom to top: B, E, A, D, G, C, F.

6. Identify the following Major keys by writing the letter-name below the staff:

A musical staff with seven measures, each showing a different key signature. The first measure has two sharps (F# and C#). The second measure has one flat (Bb). The third measure has three sharps (F#, C#, G#). The fourth measure has one sharp (F#). The fifth measure has one flat (Bb). The sixth measure has two flats (Bb and Eb). The seventh measure has two sharps (F# and C#).

A E<sup>b</sup> F<sup>#</sup> D F B<sup>b</sup> G<sup>b</sup>

7. Write the key signature for the following keys:

A musical staff with five measures, each showing a different key signature. The first measure has two sharps (F# and C#). The second measure has three sharps (F#, C#, G#). The third measure has two flats (Bb and Eb). The fourth measure has one sharp (F#). The fifth measure has three sharps (F#, C#, G#).

D

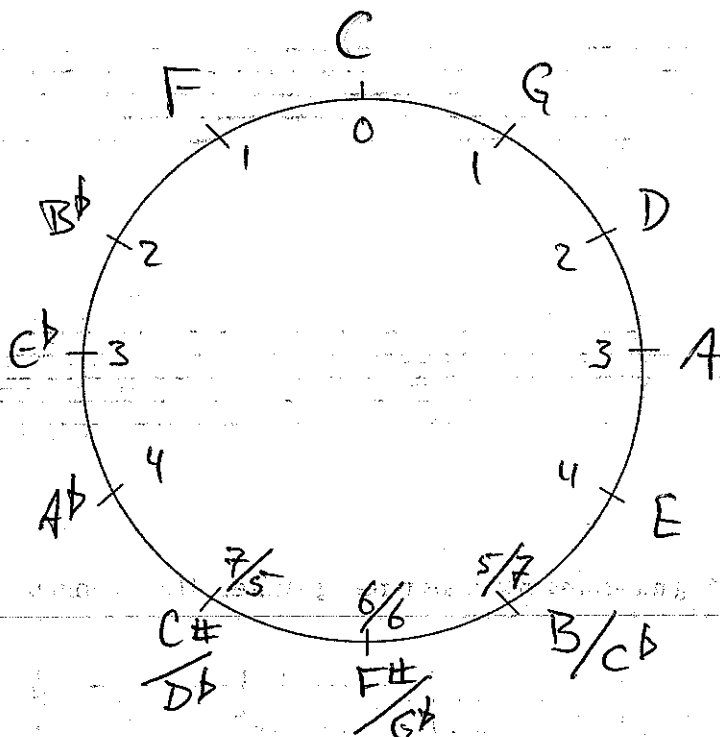
B

Ab

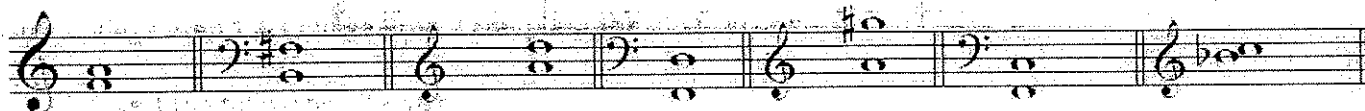
E

C#

8. Complete the circle of 5ths – include all 14 major keys. Include the number of flats or sharps for a key on the inside of the circle:



9. Identify the intervals – give the quality and the number:



M3

P5

P4

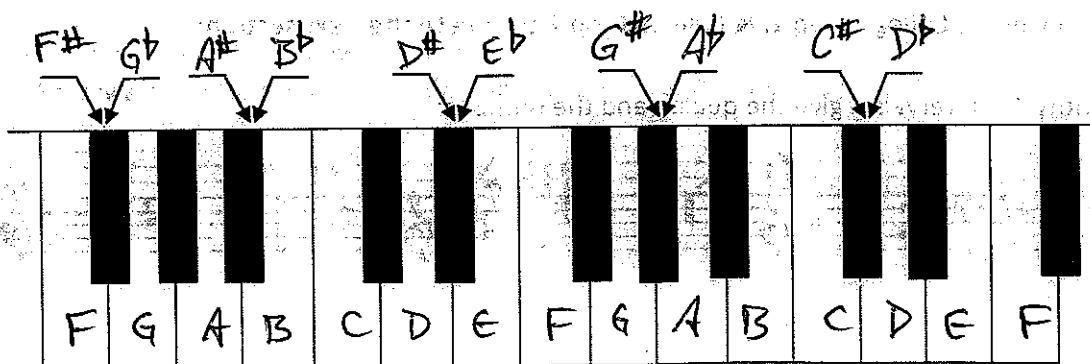
M6

M7

P5

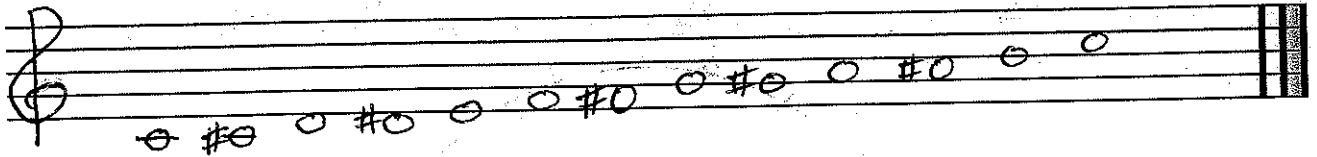
M2

10. Name the keys on the keyboard – include all enharmonics on the black notes indicated:

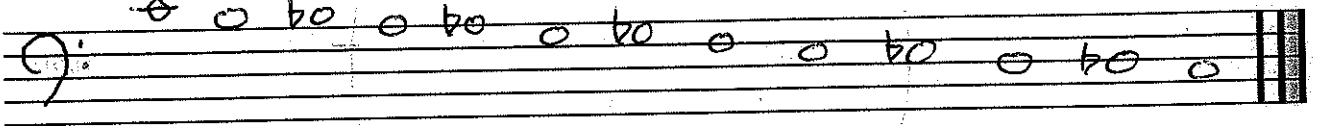


11. Write a 1 Octave chromatic scale ascending and descending – begin on a "C". Be sure to include a clef:

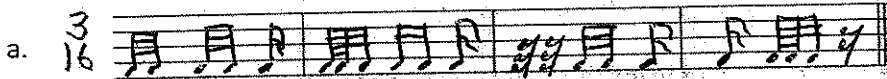
Ascending:



Descending:



12. Complete the following measures in various time signatures. Use a minimum of 5 notes or rests per measure.



MUSICIANSHIP ONE CLASSES STOP HERE – ALL OTHER LEVELS CONTINUE ON →

Only Musicianship 2, College Prep 1, & College Prep 2 complete the next section:

13. Identify the intervals – give the quality and the number:



m6       $\overset{05}{d5}$   
TT

M7       $+2$   
A2

M3      d4      m3

14. Minor Scales – write the following scales – don't forget your clef, but don't use a key signature:

a. E flat Natural minor

b. C Harmonic minor

c. D Melodic minor



MUSICIANSHIP TWO CLASSES STOP HERE – ALL OTHER LEVELS CONTINUE ON ⇨

Only College Prep 1 & College Prep 2 complete the next section:

15. Invert the following intervals:

- a. M 3 inverts to m6
- b. A 4 inverts to d5
- c. M 6 inverts to m3
- d. d 7 inverts to A2
- e. m 2 inverts to M7
- f. P 5 inverts to P4

16. Identify the quality of the following triads:

(Use M for Major, m for minor, ° for diminished, and + for Augmented)

M

m

+

d

m

17. Write the following triads and triad inversions:

$C^6$        $a^\circ$        $Bb^{+6}_4$        $gb^6$        $D$

18. Write the following modal scales – do not use a key signature:

a. G Phrygian

b. C Mixolydian

c. F Locrian

19. Write the following 7<sup>th</sup> chords and inversions:

$B^4_3$        $Ab^{M7}$        $g^{26}_5$        $d2$        $eb^{07}$

20. Identify the following 7<sup>th</sup> chords and inversions:

$e^5_5$        $b^{07}$        $G^4_3$        $B^b m2$        $f^{07}$        $C^7$



**COLLEGE PREP 1 CLASSES STOP HERE – COLLEGE PREP 2 CONTINUE ON →**

Only College Prep 2 complete the next section:

21. Complete a Roman Numeral analysis of the following excerpt. Also circle and identify all non-chordal tones:

1. 2. 3. 4. 5. 6. 7. 8. 9. 10. 11. 12. 13. 14. 15. 16. 17. 18.

Key:  $E^b$

I V<sub>7</sub> VI V<sub>6</sub> I I<sub>6</sub> V<sub>7</sub> V<sub>7</sub> I V<sub>6</sub> I IV<sub>6</sub> I IV I<sub>6</sub> V V<sub>7</sub> I

22. Please write 8 seventh chords in inversion on the following grand staff, following these rules:

- Write at least one of each type (Major, Minor, Dominant, Half-Diminished, Fully-Diminished)
- Write two in root position, two in 1st, two in 2nd, and two in 3rd inversion.
- Write 4 in closed position and 4 in open position
- Write at least 2 pitches on each staff
- Do not repeat any root pitches
- Label each chord below the staff

|                         |                         |                                |                                 |                                |                           |                           |                              |
|-------------------------|-------------------------|--------------------------------|---------------------------------|--------------------------------|---------------------------|---------------------------|------------------------------|
| $G^M7$                  | $a^7$                   | $E^b6_7$                       | $G^{\flat 5}$                   | $C^{\flat 7}$                  | $A^M7$                    | $C^m7$                    | $A^7$                        |
| Major<br>Root<br>Closed | minor<br>Root<br>Closed | Dominant<br>1st inv.<br>Closed | half-dim.<br>1st inv.<br>Closed | diminished<br>2nd inv.<br>Open | Major<br>2nd inv.<br>Open | minor<br>3rd inv.<br>Open | Dominant<br>3rd inv.<br>Open |

23. Complete the following cadences:

1. PAC

2. DC

3. PC

4. HC

The image shows four musical cadences on a grand staff (treble and bass clefs).  
1. PAC: Treble clef has a half note D4, bass clef has a half note D3.  
2. DC: Treble clef has a half note E4, bass clef has a half note E3.  
3. PC: Treble clef has a half note F#4, bass clef has a half note F#3.  
4. HC: Treble clef has a half note G4, bass clef has a half note G3.

D:  $\underline{V_7} \underline{I}$  E:  $\underline{V_7} \underline{VI}$  b:  $\underline{V} \frac{6}{5} \frac{4}{3} \underline{I} \underline{6}$  g:  $\underline{IV_7} \underline{V}$