

SIERRA MUSIC PRESENTS
BENNY CARTER'S "KANSAS CITY SUITE"

ROMPIN' AT THE RENO

AS RECORDED BY THE COUNT BASIE ORCHESTRA (ROULETTE)

GUITAR

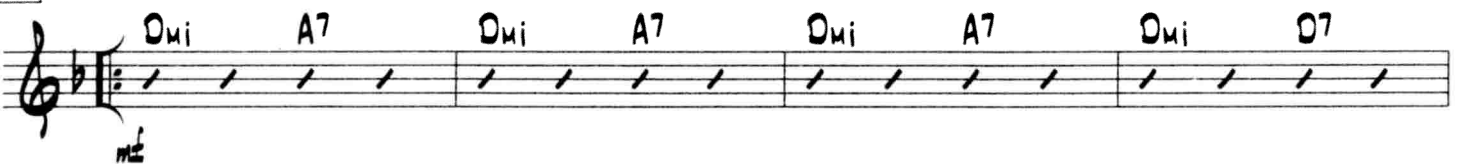
BENNY CARTER

$\text{♩} = 260$ FAST SWING

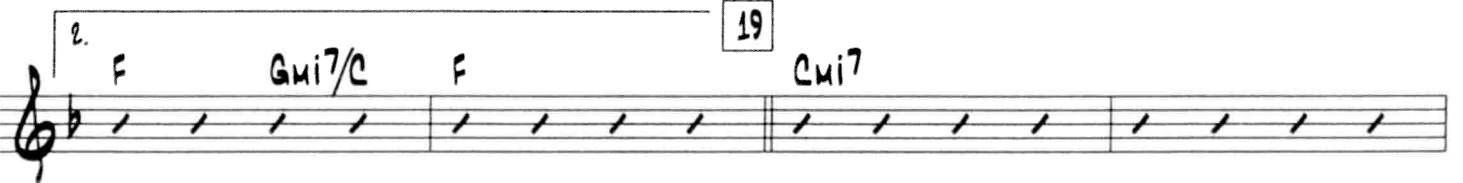
8



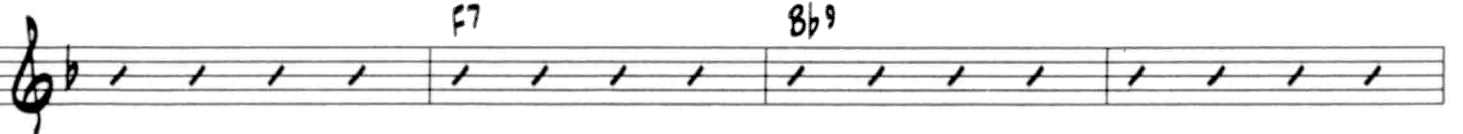
9



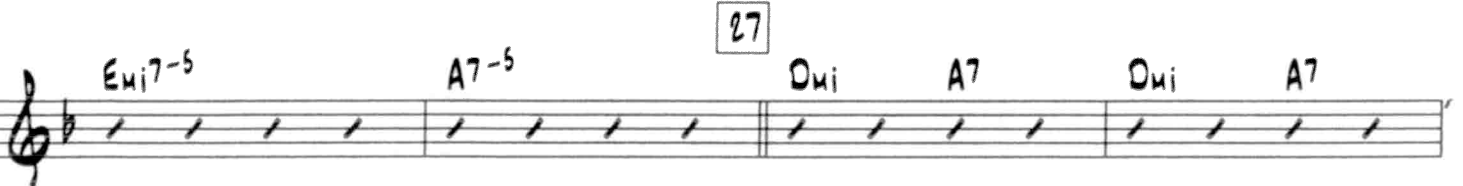
19



21



27



ROMPIN' AT THE RENO - GUITAR - PG. 2

29

Dmi A7 Dmi D7 Gmi D7 Gmi Boim

35

F Gmi7/C F A7 Dmi A7 Dmi A7

mf

37

Dmi A7 Dmi D7 Gmi D7 Gmi Boim

43

F Bb7 Emi7-5 A7+5 Dmi A7 Dmi A7

mf

45

Dmi A7 Dmi D7 Gmi D7 Gmi Boim

51

(TENOR SOLO)

F Gmi7/C Boim F Boim Cmi7 F7

53

Cmi7 F7 Bb9

59

A7 Eb9 Dmi A7 Dmi A7

61

Dmi A7 Dmi D7 Gmi D7 Gmi Boim

ROMPIN' AT THE RENO - GUITAR - PG. 3

67 (TRP. SOLO)

F Gmi7/C F A7 Dmi A7 Dmi A7

69 Dmi A7 Dmi D7 Gmi D7 Gmi Boim

1. F Bb7 A7 Eb9 2. F Bb Boim F

77 Cmi7 F9 Cmi7 F9

81 Bb9 Emi7-5/A Eb9

85 Dmi A7 Dmi A7 Dmi A7 Dmi D7

89 Gmi D7 Gmi Boim F Gmi7/C F A7 (ENSEMBLE)

93 Dmi6 A7-9 Dmi6 A7-9 Dmi A7-9 Dmi D7-9

97 Gmi6 D7-9 Gmi Boim F Bb9 Emi7-5 Eb9

ROMPIN' AT THE RENO - GUITAR - PG. 4

101 STRONGER!

Dmi6 A7-9 Dmi6 A7-9 Dmi6 A7-9 Dmi D7-9

105

Gmi D7-9 Gmi Boim F Gmi7/C Boim F

109 (PNO. SOLO)

Cmi7 F7 Cmi7 F7

mf

113

Bb7 Emi7-5 A7+5

117

Dmi A7 Dmi A7 Dmi A7 Dmi D7

mf

121

Gmi D7 Gmi Boim F Bb Boim F

125

F Bb Boim F F

4

ff Gb13 F13 A