

SIERRA MUSIC PRESENTS
BENNY CARTER'S "KANSAS CITY SUITE"

ROMPIN' AT THE RENO

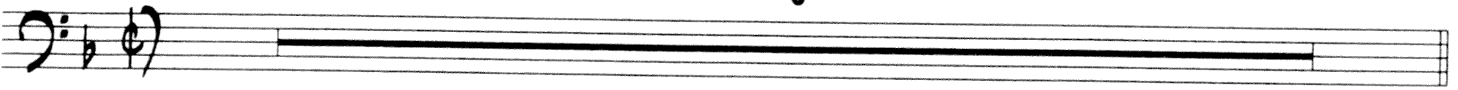
AS RECORDED BY THE COUNT BASIE ORCHESTRA (ROULETTE)

BASS

BENNY CARTER

$\text{♩} = 260$ FAST SWING

8



9 D_{mi} $A7$ D_{mi} A D_{mi} $A7$ D_{mi} $D7$

13 G_{mi} $D7$ G_{mi} B_{dim} F $Bb7$ $E_{mi}7-5$ $A7+5$

2. F C F 19 $C_{mi}7$

21 $F7$ $Bb9$

$E_{mi}7-5$ $A7-5$ 27 D_{mi} $A7$ D_{mi} $A7$

ROMPIN' AT THE RENO - BASS - PG. 2

29 Dmi A7 Dmi D7 Gmi D7 Gmi Boim

Handwritten bass line for measures 29-34. The key signature has one flat (Bb). The notes are: 29: G2, Bb2, D3, F3; 30: G2, Bb2, D3, F3; 31: G2, Bb2, D3, F3; 32: G2, Bb2, D3, F3; 33: G2, Bb2, D3, F3; 34: G2, Bb2, D3, F3.

F C F A7 35 Dmi A7 Dmi A7

Handwritten bass line for measures 35-36. Measure 35: G2, Bb2, D3, F3. Measure 36: G2, Bb2, D3, F3.

37 Dmi A7 Dmi D7 Gmi D7 Gmi Boim

Handwritten bass line for measures 37-42. The notes are: 37: G2, Bb2, D3, F3; 38: G2, Bb2, D3, F3; 39: G2, Bb2, D3, F3; 40: G2, Bb2, D3, F3; 41: G2, Bb2, D3, F3; 42: G2, Bb2, D3, F3.

F ^{Bb7} E_bmi7-5 A7+5 43 Dmi A7 Dmi A7

Handwritten bass line for measures 43-44. Measure 43: G2, Bb2, D3, F3. Measure 44: G2, Bb2, D3, F3.

45 Dmi A7 Dmi D7 Gmi D7 Gmi Boim

Handwritten bass line for measures 45-50. The notes are: 45: G2, Bb2, D3, F3; 46: G2, Bb2, D3, F3; 47: G2, Bb2, D3, F3; 48: G2, Bb2, D3, F3; 49: G2, Bb2, D3, F3; 50: G2, Bb2, D3, F3.

F C Boim F Boim 51 Cmi7 (TENOR SOLO) F7

Handwritten bass line for measures 51-54. Measure 51: G2, Bb2, D3, F3. Measure 52: G2, Bb2, D3, F3. Measure 53: G2, Bb2, D3, F3. Measure 54: G2, Bb2, D3, F3.

55 Cmi7 F7 Bb9

Handwritten bass line for measures 55-58. The notes are: 55: G2, Bb2, D3, F3; 56: G2, Bb2, D3, F3; 57: G2, Bb2, D3, F3; 58: G2, Bb2, D3, F3.

A7 Eb9 59 Dmi A7 Dmi A7

Handwritten bass line for measures 59-60. Measure 59: G2, Bb2, D3, F3. Measure 60: G2, Bb2, D3, F3.

61 Dmi A7 Dmi D7 Gmi D7 Gmi Boim

Handwritten bass line for measures 61-66. The notes are: 61: G2, Bb2, D3, F3; 62: G2, Bb2, D3, F3; 63: G2, Bb2, D3, F3; 64: G2, Bb2, D3, F3; 65: G2, Bb2, D3, F3; 66: G2, Bb2, D3, F3.

ROMPIN' AT THE RENO - BASS - PG. 3

67 (PT. SOLO) Dmi A7 Dmi A7

69 Dmi A7 Dmi D7 Gmi D7 Gmi Boim

1. F Bb7 A7 Eb9 2. F Bb Boim F

77 Cmi7 F9 Cmi7 F9

81 Bb9 Emi7-5 Eb9

85 Dmi A7 Dmi A7 Dmi A7 Dmi D7

89 Gmi D7 Gmi Boim F Csus F A7 (ENSEMBLE)

93 Dmi6 A7 Dmi6 A7 Dmi A7 Dmi D7

97 Gmi6 D7 Gmi Boim F Bb9 Emi7-5 Eb9

ROMPIN' AT THE RENO - BASS - PG. 4

STRONGER!

101

Dmi^b A7 Dmi^b A7 Dmi^b A7 Dmi D7

Bass line for measures 101-104. The notes are: G2, A2, B2, C3, D3, E3, F3, G3, A3, B3, C4, D4, E4, F4, G4, A4, B4, C5.

105

Gmi D7 Gmi Bdim F Csus Bdim F

Bass line for measures 105-108. The notes are: G2, A2, B2, C3, D3, E3, F3, G3, A3, B3, C4, D4, E4, F4, G4, A4, B4, C5.

109

(PNO SOLO)
Cmi

F7

Cmi7

F7

Bass line for measures 109-112. The notes are: G2, A2, B2, C3, D3, E3, F3, G3, A3, B3, C4, D4, E4, F4, G4, A4, B4, C5.

mf

113

Bb7

E^bmi7-5

A7+5

Bass line for measures 113-116. The notes are: G2, A2, B2, C3, D3, E3, F3, G3, A3, B3, C4, D4, E4, F4, G4, A4, B4, C5.

117

Dmi A7 Dmi A7 Dmi A7 Dmi D7

Bass line for measures 117-120. The notes are: G2, A2, B2, C3, D3, E3, F3, G3, A3, B3, C4, D4, E4, F4, G4, A4, B4, C5.

mf

121

Gmi D7 Gmi Bdim F Bb Bdim F

Bass line for measures 121-124. The notes are: G2, A2, B2, C3, D3, E3, F3, G3, A3, B3, C4, D4, E4, F4, G4, A4, B4, C5.

125

F Bb Bdim F F

Bass line for measures 125-128. The notes are: G2, A2, B2, C3, D3, E3, F3, G3, A3, B3, C4, D4, E4, F4, G4, A4, B4, C5.

4

132

15 15

Bass line for measures 132-135. The notes are: G2, A2, B2, C3, D3, E3, F3, G3, A3, B3, C4, D4, E4, F4, G4, A4, B4, C5.

ff